



SWISS  base

To share and preserve your research data

Jennifer Dean

Purpose



To serve the Swiss scientific community to share and preserve research data for future reuse.

What is SWISSUbase?



- > **Platform** – Multidisciplinary platform for the sharing and preserving of Swiss research data.
→ Long-term preservation, access and reuse.
- > **Services** – Data curation, support and consultation services direct to researchers.

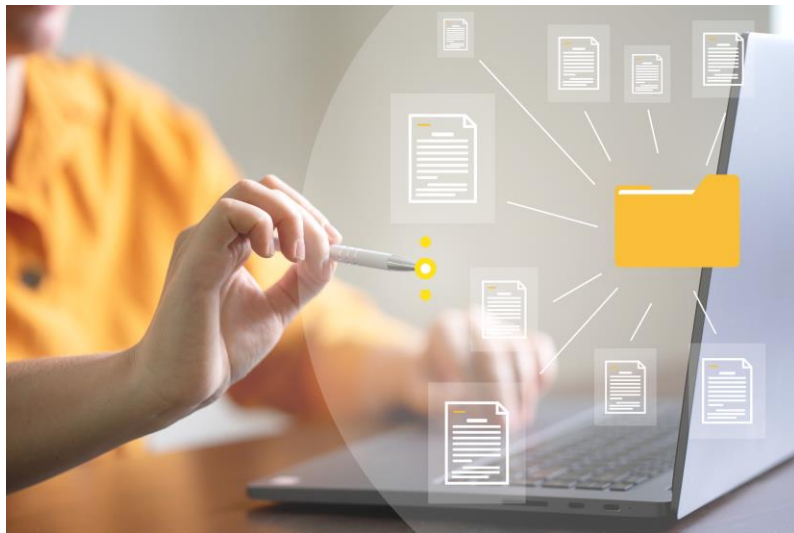
Benefits of SWISSUbase

- > General and discipline-specific metadata (EN, FR, DE, IT)
- > Multilingual user interface (EN, FR, DE)
- > Data curation by archiving experts
- > Personal support & consultation services
- > Data hosted on Swiss servers (SWITCH)
- > Free for researchers (!)



What makes SWISSUbase unique?

> Rich metadata



> Support services and expertise



Network of Data Service Units



- > FORS Data Service: Social sciences – all CH
- > LaRS (Language Repository of Switzerland): Linguistics – all CH
- > UNIL Data Service: Across 7 UNIL faculties
- > UNINE Data Service: Across 4 UNINE faculties

SWISSUbase for Humanities (CH): 2024

A person with dark hair, wearing a dark grey t-shirt, is holding a large white rectangular sign in front of their face. The sign has the word "Humanities" written on it in a blue, sans-serif font. The background is a plain, light-colored wall.

Humanities

Available for Humanities in 2024

- > Humanities metadata schema
- > Data Services & Curation: by DaSCH

Thank you!

SWISSUbase Management Team:

Jennifer Dean

Jennifer.Dean@fors.unil.ch

Stefan Buerli

Stefan.Buerli@fors.unil.ch

Bojana Tasic,

Bojana.Tasic@fors.unil.ch

SWISS  base

www.swissubase.ch

CREDITS: This presentation template was created including Feather icons, infographics & images by Freepik, illustrations by Stories, presentation templates by PresentationGo and freeicons.io